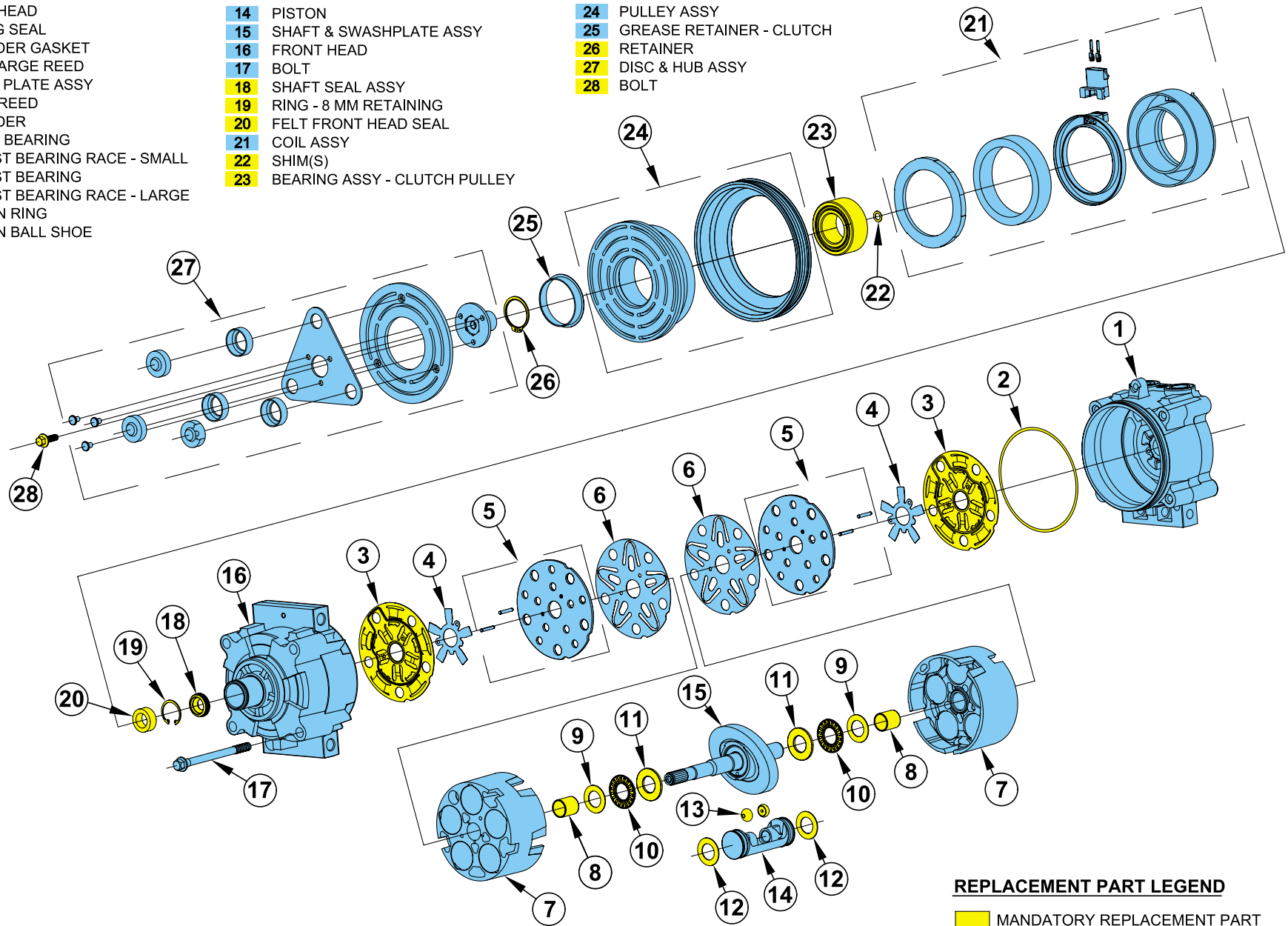


- 1 REAR HEAD
- 2 O-RING SEAL
- 3 CYLINDER GASKET
- 4 DISCHARGE REED
- 5 VALVE PLATE ASSY
- 6 INLET REED
- 7 CYLINDER
- 8 SHAFT BEARING
- 9 THRUST BEARING RACE - SMALL
- 10 THRUST BEARING
- 11 THRUST BEARING RACE - LARGE
- 12 PISTON RING
- 13 PISTON BALL SHOE

- 14 PISTON
- 15 SHAFT & SWASHPLATE ASSY
- 16 FRONT HEAD
- 17 BOLT
- 18 SHAFT SEAL ASSY
- 19 RING - 8 MM RETAINING
- 20 FELT FRONT HEAD SEAL
- 21 COIL ASSY
- 22 SHIM(S)
- 23 BEARING ASSY - CLUTCH PULLEY

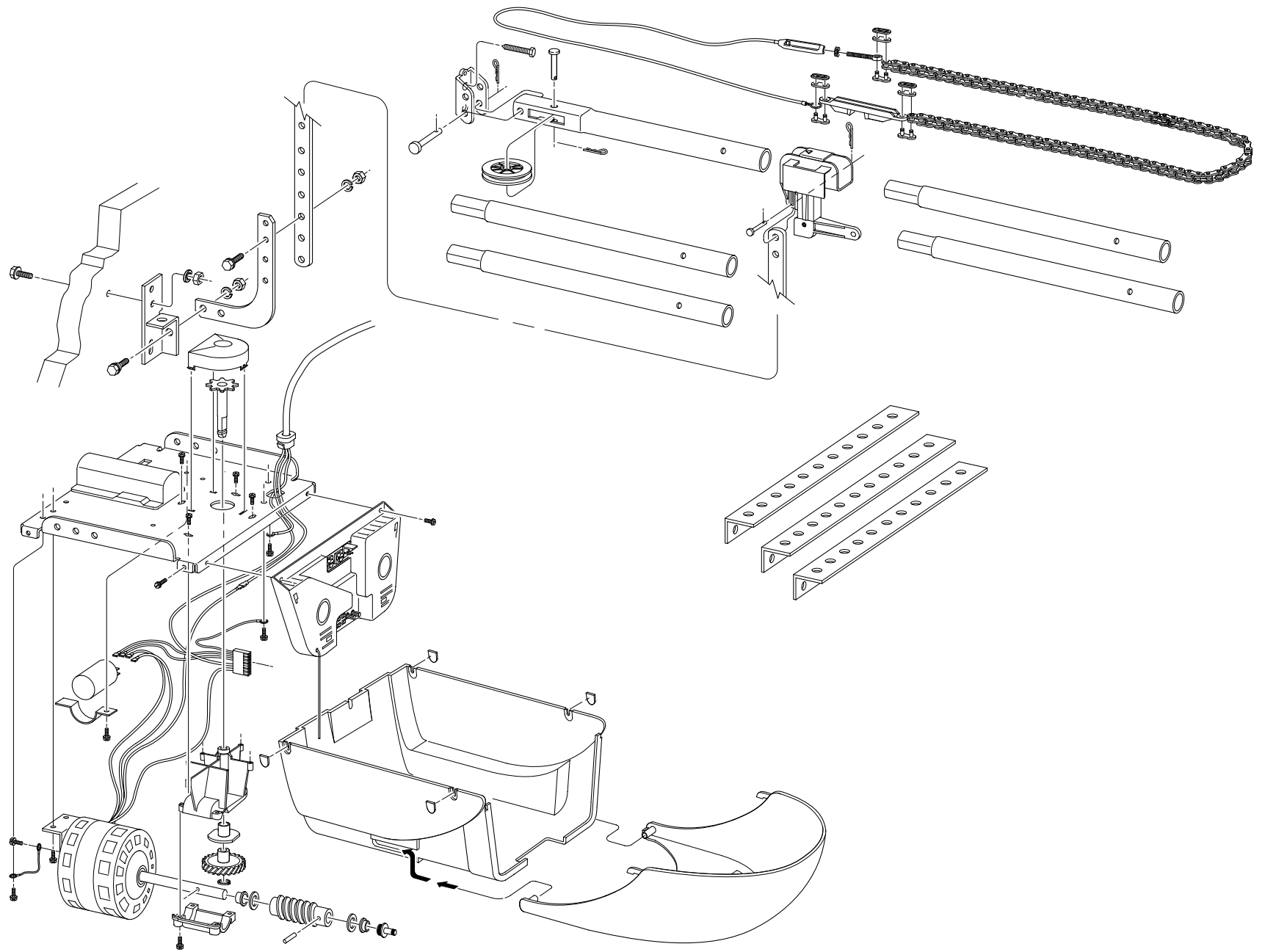
- 24 PULLEY ASSY
- 25 GREASE RETAINER - CLUTCH
- 26 RETAINER
- 27 DISC & HUB ASSY
- 28 BOLT

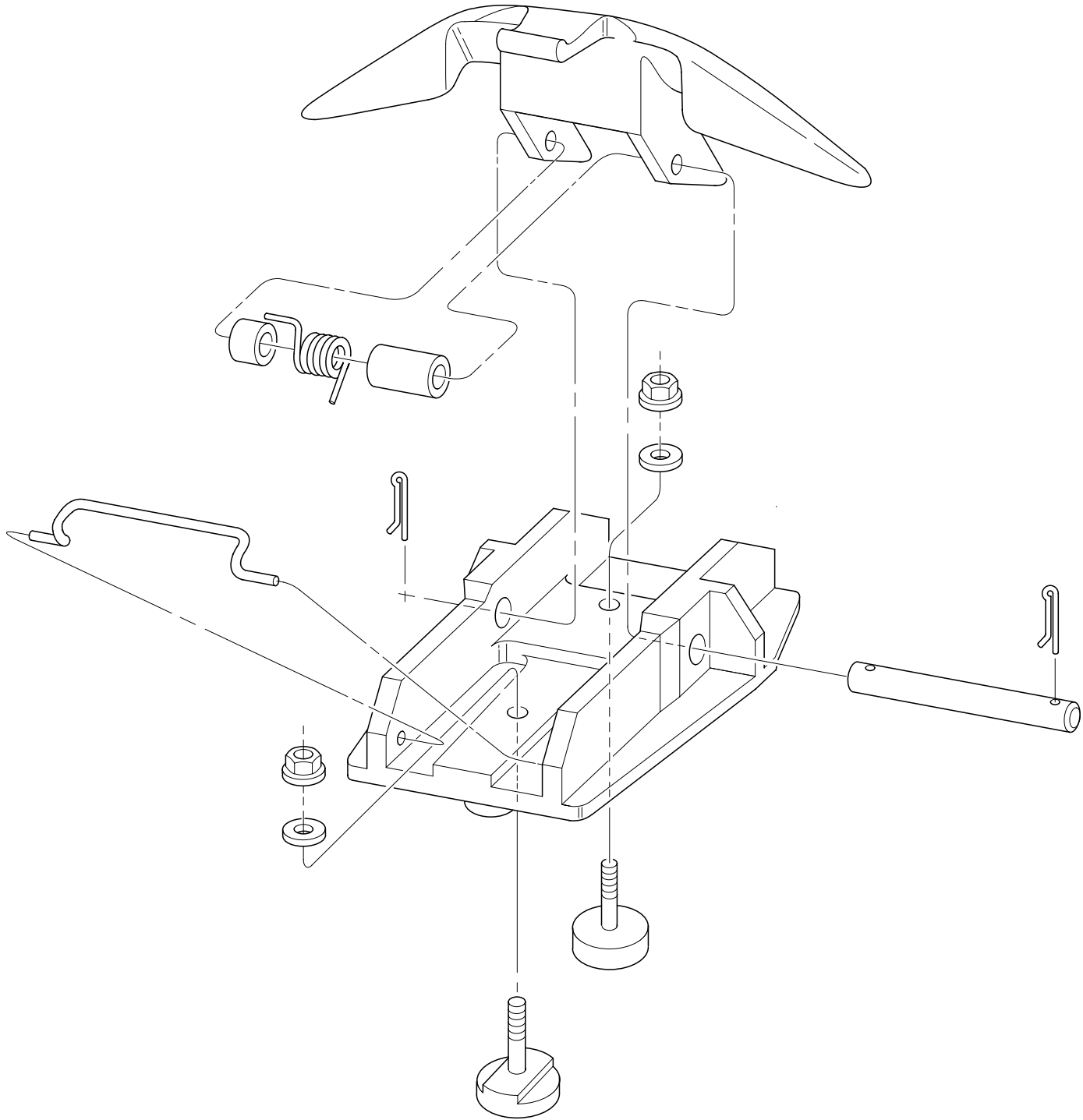


REPLACEMENT PART LEGEND

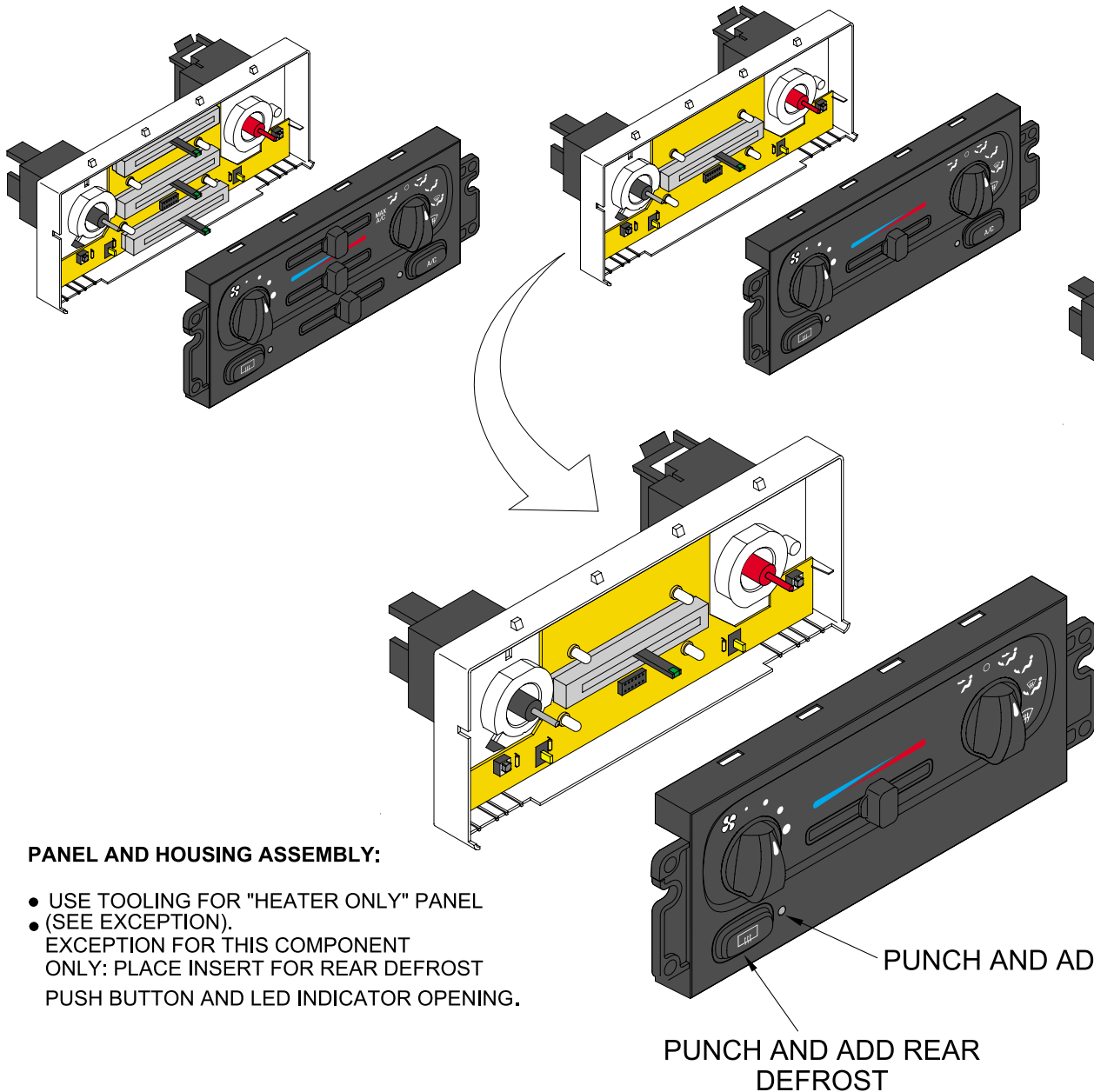
- MANDATORY REPLACEMENT PART
- REPLACED AS NECESSARY

A/C COMPRESSOR





CONTROL PANEL ASSEMBLY



PANEL AND HOUSING ASSEMBLY:

- USE TOOLING FOR "HEATER ONLY" PANEL
- (SEE EXCEPTION).
- EXCEPTION FOR THIS COMPONENT ONLY: PLACE INSERT FOR REAR DEFROST PUSH BUTTON AND LED INDICATOR OPENING.

PCB:

- USE EXISTING PCB FOR NON-AUX. A/C CONTROL.
- NOTE: ABENCE OF SIGNAL FROM A/C SWITCH WILL NOT CONFUSE THE CLUSTER

APPLIQUE:

- SILK SCREEN GRAPHICS FOR HEATER ONLY
- USE FORMING AND PUNCHING TOOL FOR EXISTING NON-AUX. A/C CONTROL (SEE EXCEPTION).
- EXCEPTION FOR THIS COMPONENT ONLY: REMOVE THE PUNCHES FOR A/C PUSH BUTTON AND LED INDICATOR OPENINGS.

PUNCH AND ADD REAR DEFROST

PUNCH AND ADD JEWEL

